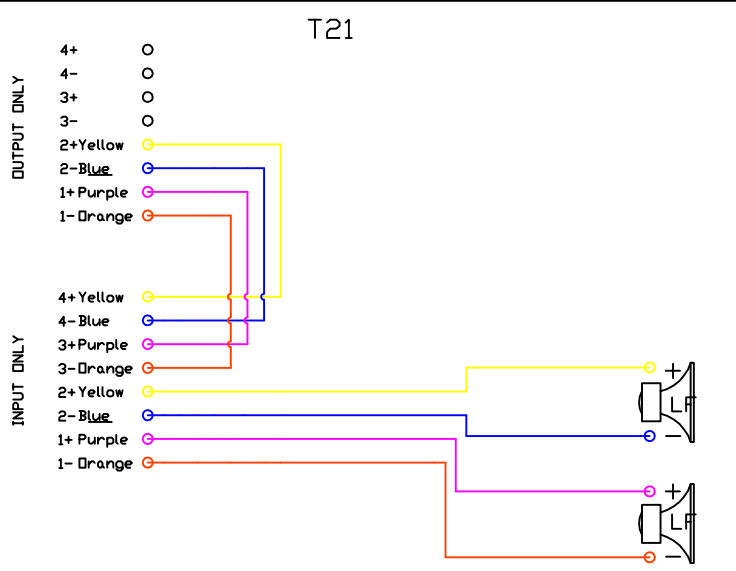
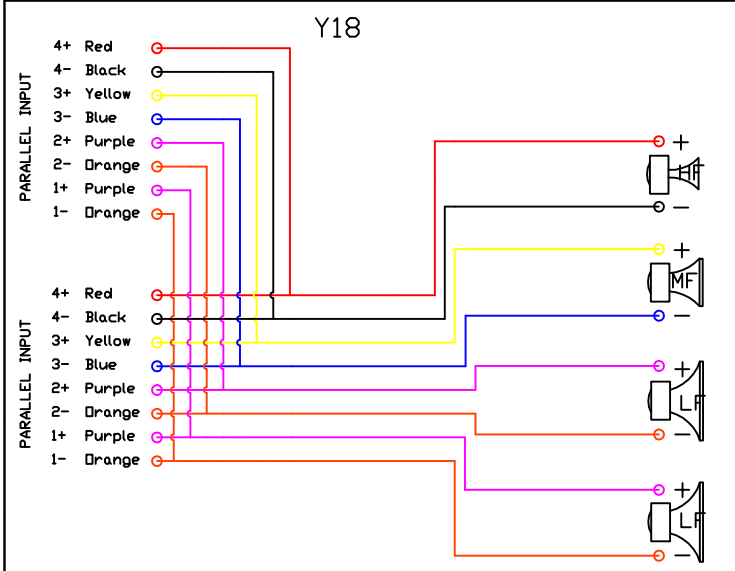
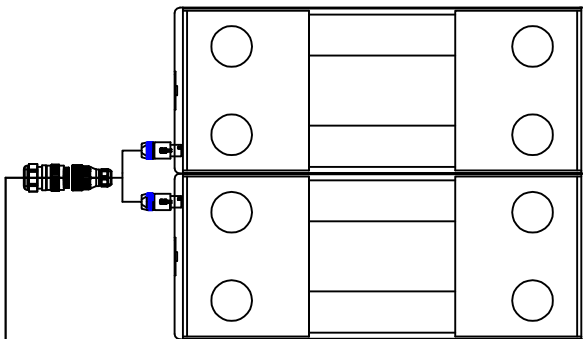
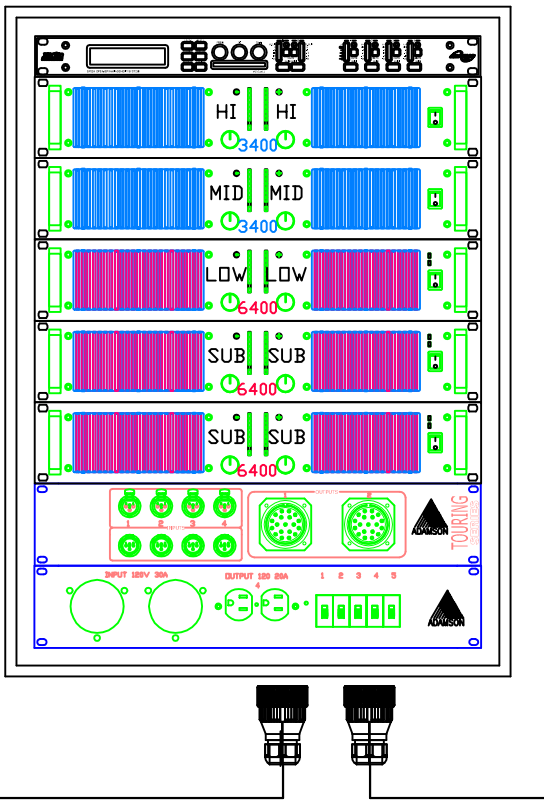
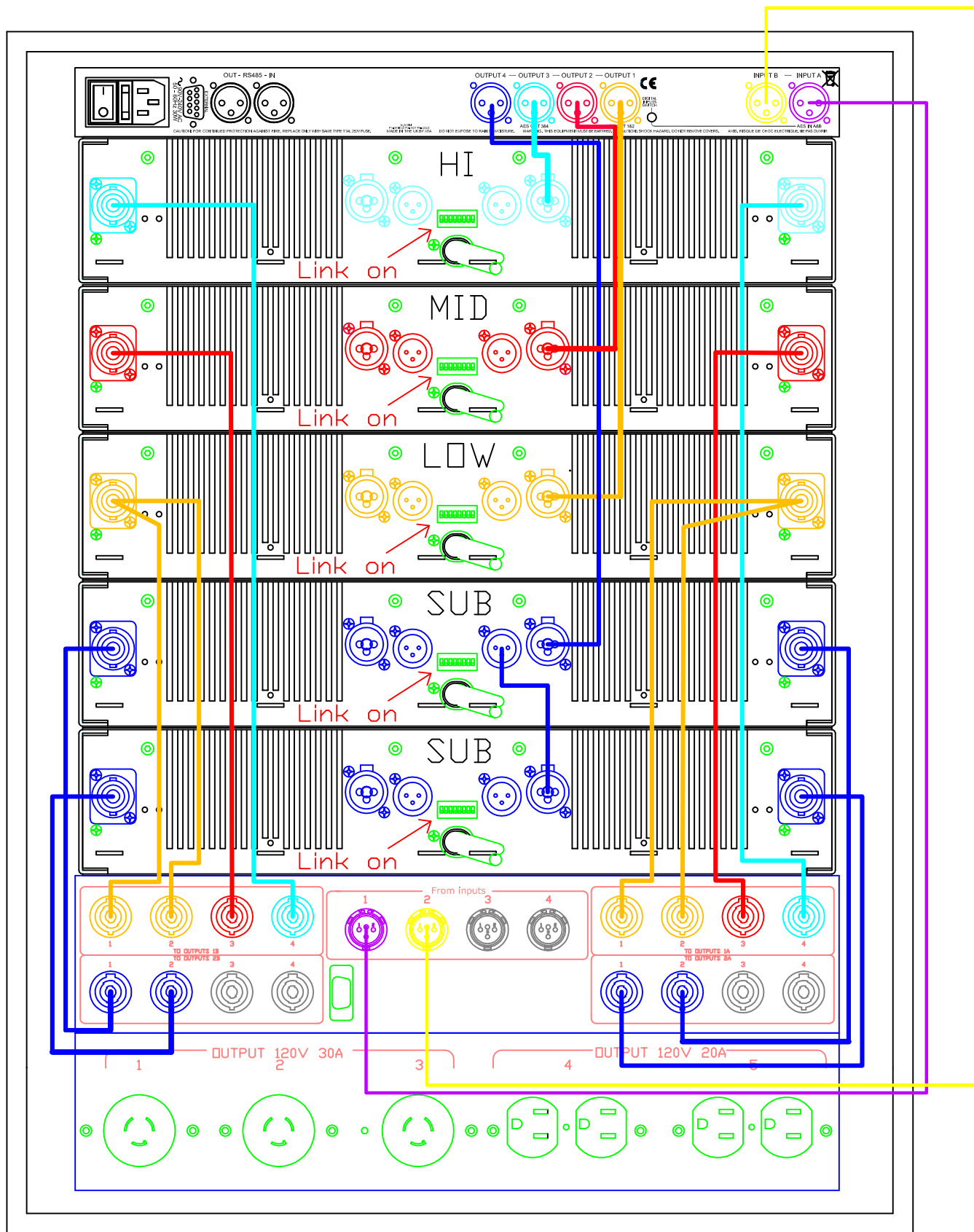
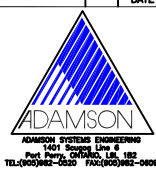


CHANGE	
DATE: March 20/2006	DRN: Ben
SCALE:	APPV'D:
DISK:	FILE:
PROJECT: Adamson Configuration	
DRAWING: 4 X Y18 & 2 T21 Sub/Soca	
Dwg #:	Issue: 1





DATE	CHANGE	Legend
DATE: March 3/2007	DRN: Jeff	High
SCALE:	APPV'D:	Mid
DISK:	FILE:	Low
PROJECT:		Sub
DRAWING:		XTA Input 1
	AID Configuration	XTA Input 2
	Dwg # Issue: 1	



ADAMSON SYSTEMS ENGINEERING  
1421 Steeles Ave. E.  
Park Royal, Ontario, L3R 1B2  
TEL: (416) 223-0229 FAX: (416) 223-0229