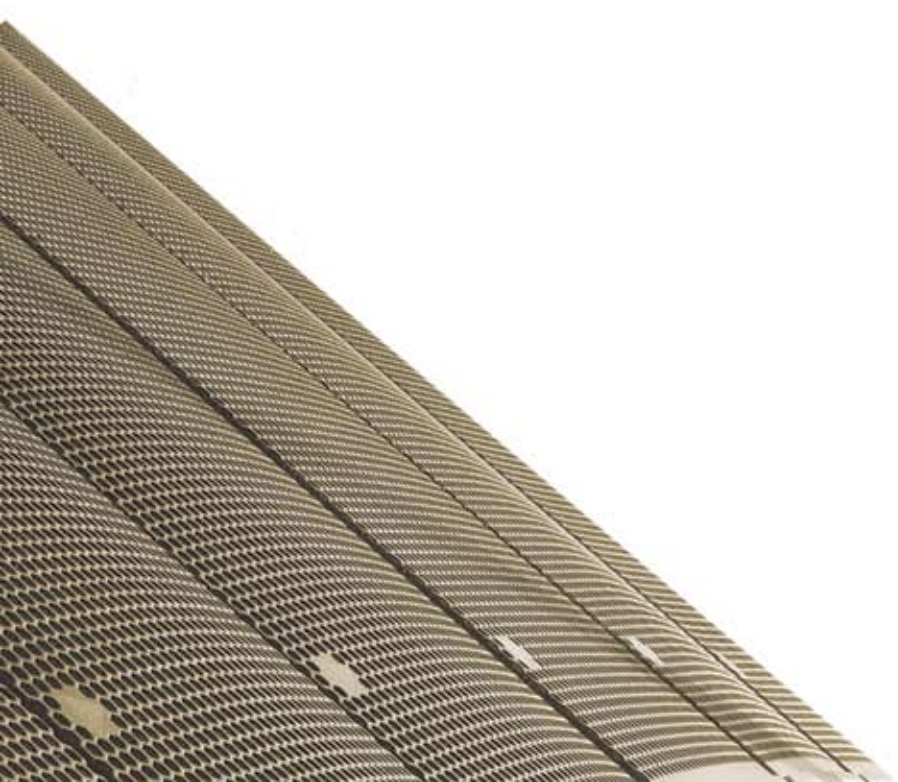




Adamson Systems Engineering

A·I·D·PANEL ^{user} manual
TOURING SERIES



ADAMSON SYSTEMS ENGINEERING
TORONTO CANADA
T:+1 [905] 982 0520 F:+1 [905] 982 0609
www.adamsonsystems.com
Copyright © 2009 Adamson Systems Engineering Inc.



Table of Contents

1.0 Introduction.....	5
2.0 Components.....	6
3.0 Inputs section	7
4.0 Outputs section.....	8
5.0 Communication	11
6.0 Pin Configuration Chart	11
7.0 Configuration Examples.....	12

1.0 Introduction



The Adamson Audio Distribution Panel is a 19" rack-mount unit, 2-U high and 10.25" deep. The Audio distribution panel is available in two series, The Touring Series and The Install Series. The panel can be further customized to a specific systems use, with four individual NL8's for standard "Speakon" connections, or with two 19-pin Socapex female panel multi-cable connectors and break-out splays for larger touring requirements.

The Adamson Touring series allows optional interconnectivity between all amp racks and FOH/MON stations through a 12 channel audio snake, using a standard 37-pin mini-Soca cables and a Bantam patch bay located on the back-panel.

2.0 Components

The Adamson Integrated Distribution Panel comes ready with all necessary components needed for connectivity within a turnkey solutions rack detailed below.

1 AID Touring Panel w.Socapex Connectors
or 1 AID Touring Panel w.NL-8 Connectors



6 x 30" speakon NL2 jumper



2 x 18" speakon NL2 jumper



2 x 30" speakon NL2 Y-jumpers



7 x XLR 30" jumpers



3.0 The inputs

There are two input sections: in the front of the panel, and in the rear of the panel.

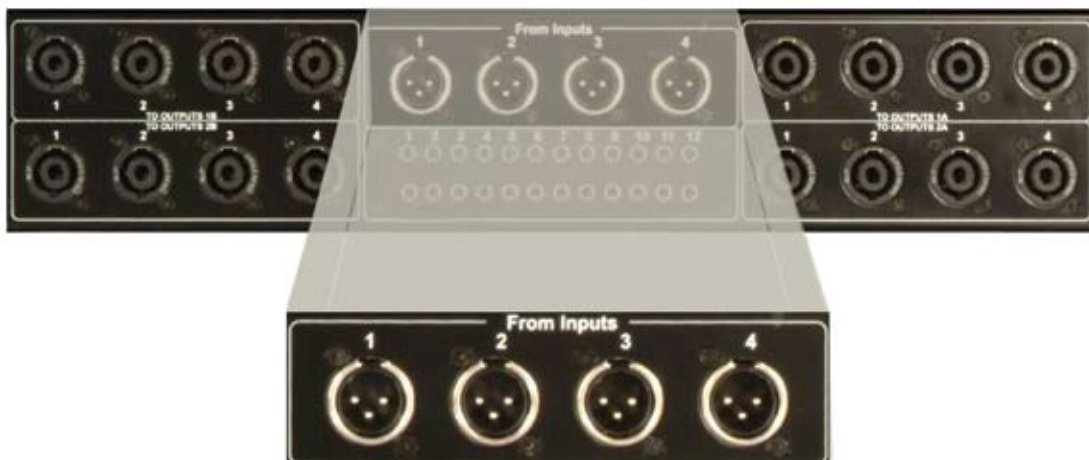
The Front Panel

The front panel input section features four XLR female and four XLR male connectors. Each connector is labelled from 1 to 4 indicating where the four signal paths should be used in order to drive the line input of the system. The female connectors are present to facilitate the loop through to another rack or for another application with the same drive line.



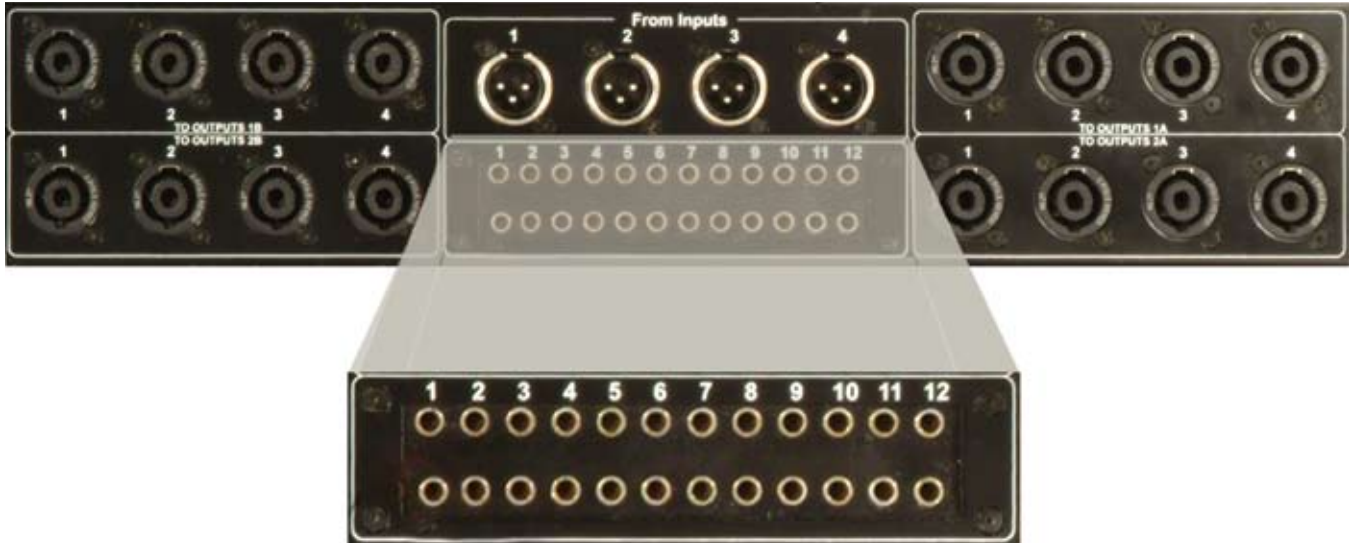
The Rear Panel

The rear connectors are indicated similarly by a white square labelled "FROM INPUTS". The male XLR connectors are fed from the front connectors. They are located at the back to facilitate the the input connection from your DSP or amplifier.



The A.I.D. panel has four different input paths. They are labelled with the numbers 1 through 4. Note: EVERY XLR CONNECTOR LABELLED WITH THE SAME NUMBER IS A PARALLEL CONNECTOR.

4.0 The outputs



The Bantam Patch Section

The bantam patch section can be configured in a few distinct ways.

1. Using a mini Soca FOH Line to the front input allows output connections to go directly to amplifiers
 i.e All DSP's placed at Front of House.

2. Using the 37 pin out on the front of several racks allows them to be jumped together; allowing the use of One DSP per array.
 i.e. To allow the use of a single DSP, a female XLR to Bantam conversion cable must be connected from the loop through on the amp, to a selected patch bay channel. Choose an appropriate amp in the amp rack chain and connect to a selected patch bay channel using Bantam to male XLR conversion cable.

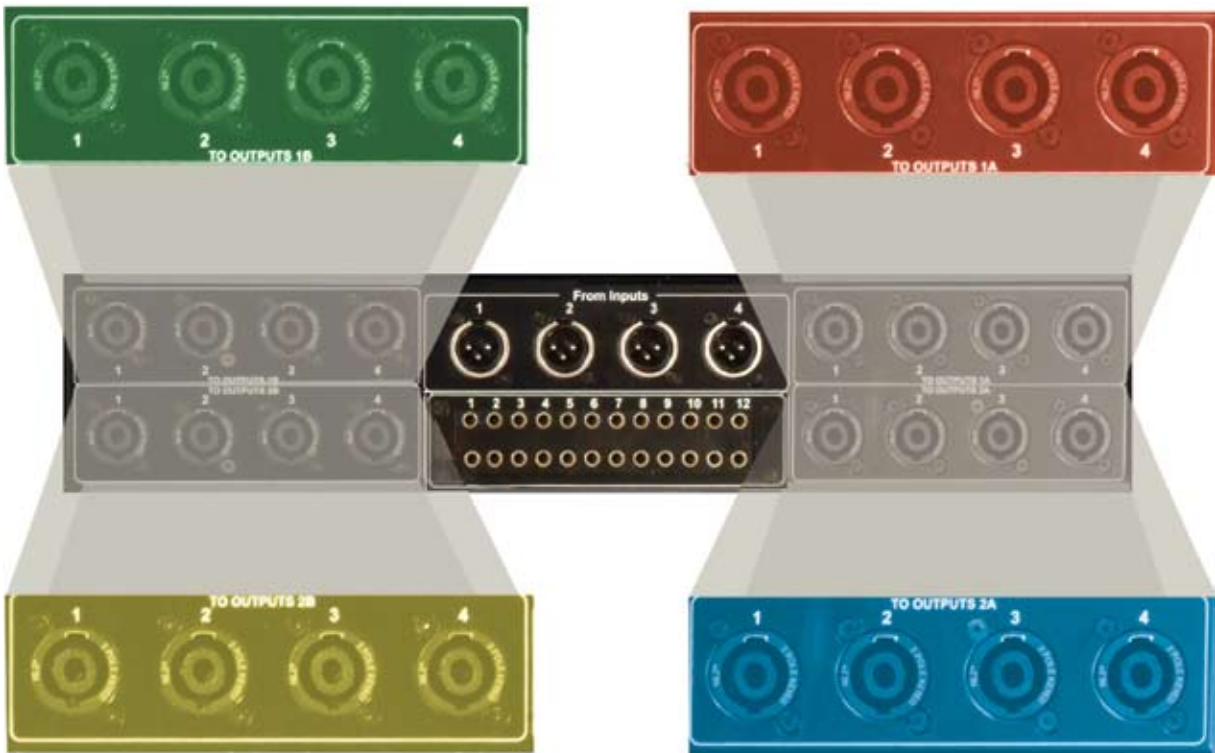
Note: Bottom row on the bantam patch acts as an additional loop through, when function not available in the amplifier in use.

4.0 The outputs

“Output group” configuration



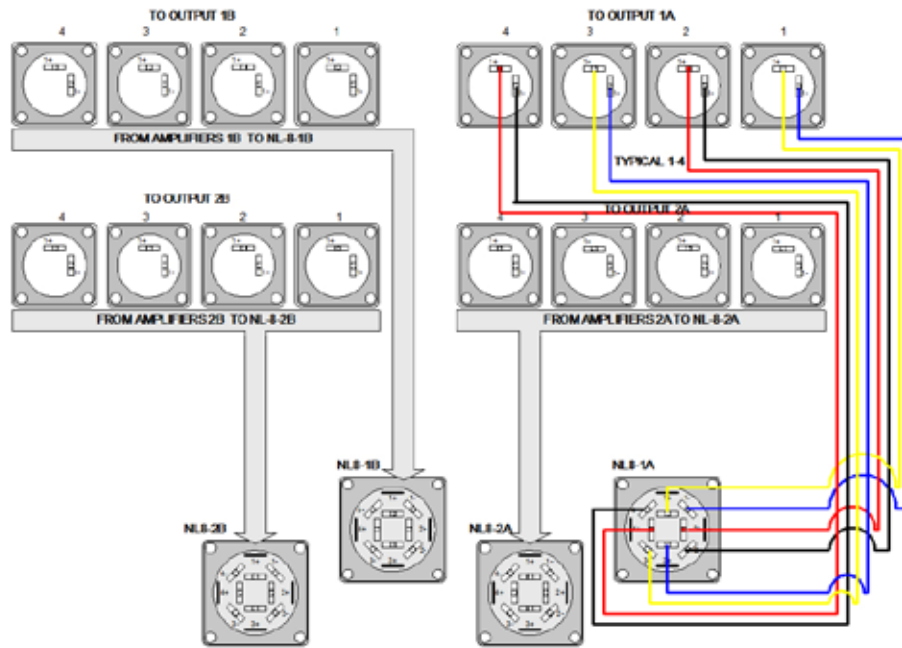
Front view



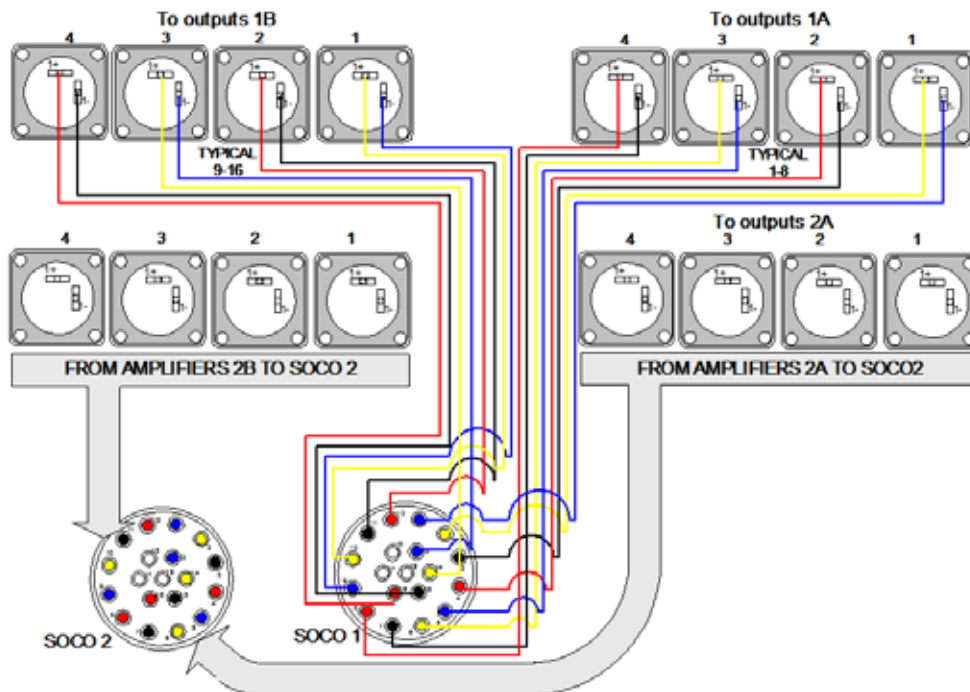
Rear view

4.0 The outputs

“Output group” configuration for NL8 configuration



“Output group” configuration for Socapex configuration



5.0 Communication

Communication to DSP through a RS485 can be sent down the mini soca, using input 11 for in and input 12 for out on the bantam patch, or it can be connected to a free XLR in the front.

6.0 Pin-out Chart

For your convenience, below is a pinout chart used in most of our products.

<u>Backpanel</u> <u>NL4 input</u>	<u>Frontpanel</u> <u>NL8 panel</u>	<u>Frontpanel</u> <u>SOCO 19pin</u>	<u>Splays</u> <u>2NL8</u>	<u>Splays</u> <u>4NL8 sub</u>	<u>Splays</u> <u>4NL4</u>
1A-1	1A 1-/+	1 - Pin 1,2	BRN 1-/+	BRN 1-/+	BRN 1-/+
1A-2	1A 2-/+	1- Pin 3,4	BRN 2-/+	BRN 2-/+	BRN 2-/+
1A-2	1A 3-/+	1- Pin 7,8	BRN 3-/+	RED 1-/+	RED 1-/+
1A-4	1A 4 -/+	1- Pin 9,10	BRN 4-/+	RED 2-/+	RED 2-/+
1B-1	1B 1-/+	1- Pin 11,12	RED 1-/+	ORN 1-/+	ORN 1-/+
1B-2	1B 2-/+	1- Pin 13,14	RED 2-/+	ORN 2-/+	ORN 2-/+
1B-3	1B 3-/+	1- Pin 15,16	RED 3-/+	YEL 1-/+	YEL 1-/+
1B-4	1B 4-/+	2- Pin 1,2	RED 4-/+	YEL 2-/+	YEL 2-/+
2A-1	2A 1-/+	2- Pin 3,4			
2A-2	2A 2-/+	2- Pin 5,6			
2A-3	2A 3-/+	2- Pin 7,8			
2A-4	2A 4-/+	2- Pin 9,10			
2B-1	2B 1-/+	2- Pin 11,12			
2B-2	2B 2-/+	2- Pin 13,14			
2B-3	2B 3-/+	2- Pin 15,16			
2B-4	2B 4-/+				

37 pin Mini- socapex

Channel	Grnd (p1)	Hot (p2)	Comm (p3)	Channel	Grnd (p1)	Hot (p2)	Comm (pin3)
1	1	2	3	7	19	20	21
2	4	5	6	8	22	23	24
3	7	8	9	9	25	26	27
4	10	11	12	10	28	29	30
5	13	14	15	11	31	32	33
6	16	17	18	12	34	35	36

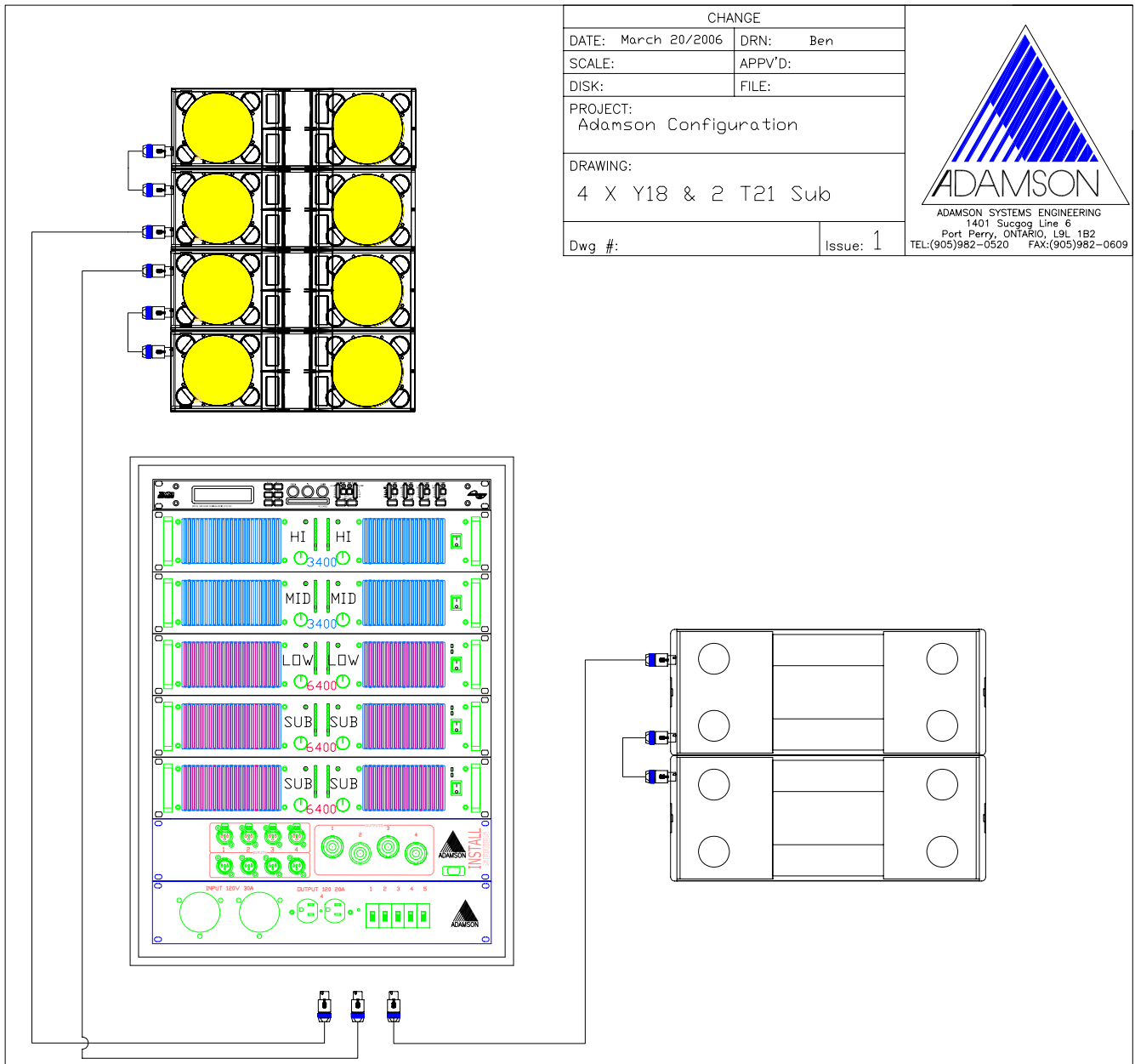
Electronic colour code

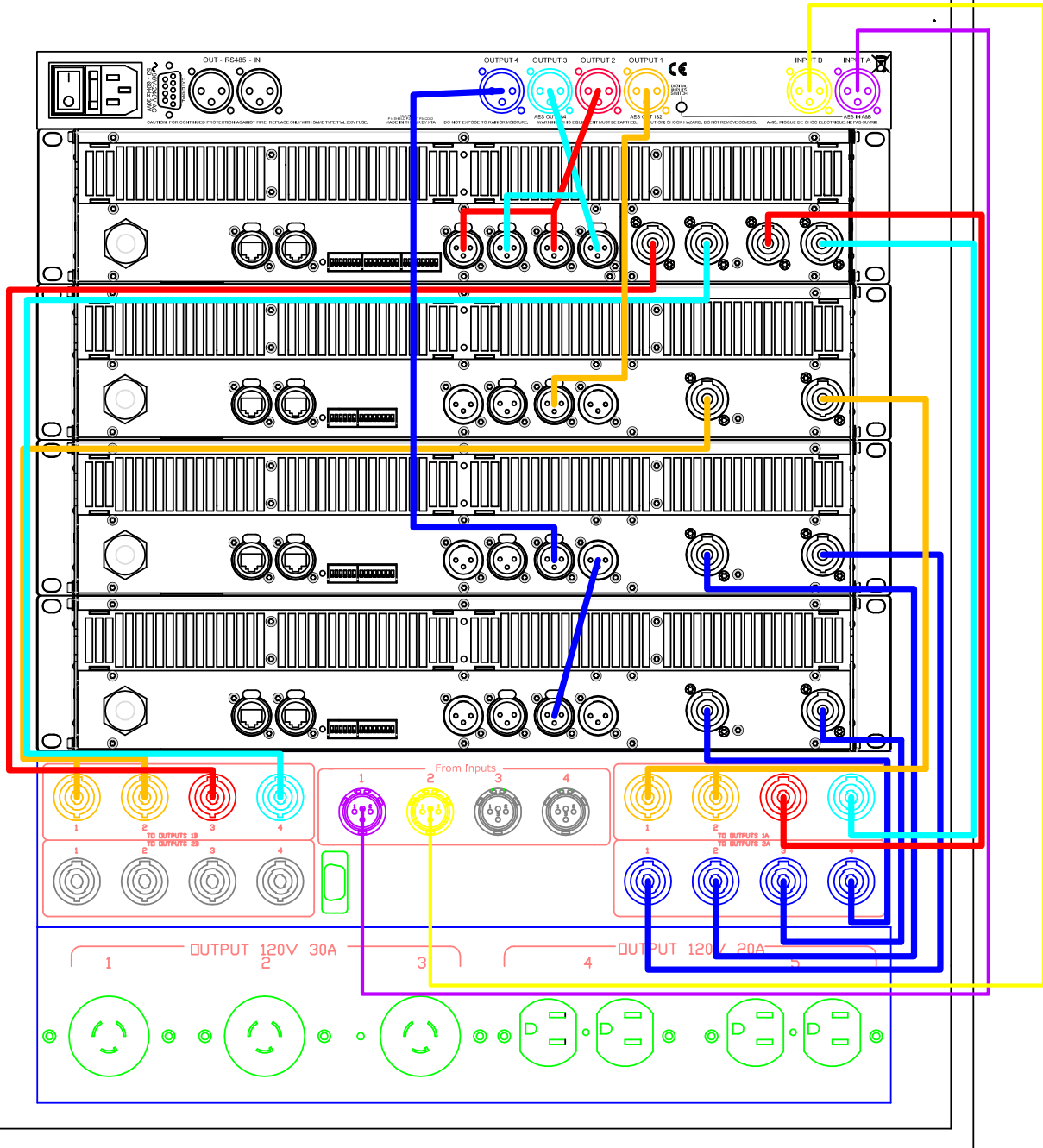
Black	0
Brown	1
Red	2
Orange	3
Yellow	4
Green	5
Blue	6
Violet	7
Grey	8
White	9



7.0 Configuration examples

Basic configuration for 4 Y18 (flown) with 2 T21 Subs (stacked) with NL8.
 Complete configurations for the full Adamson product Line are available for download in pdf format on our website: www.adamsonproaudio.com/technical_support/index.htm



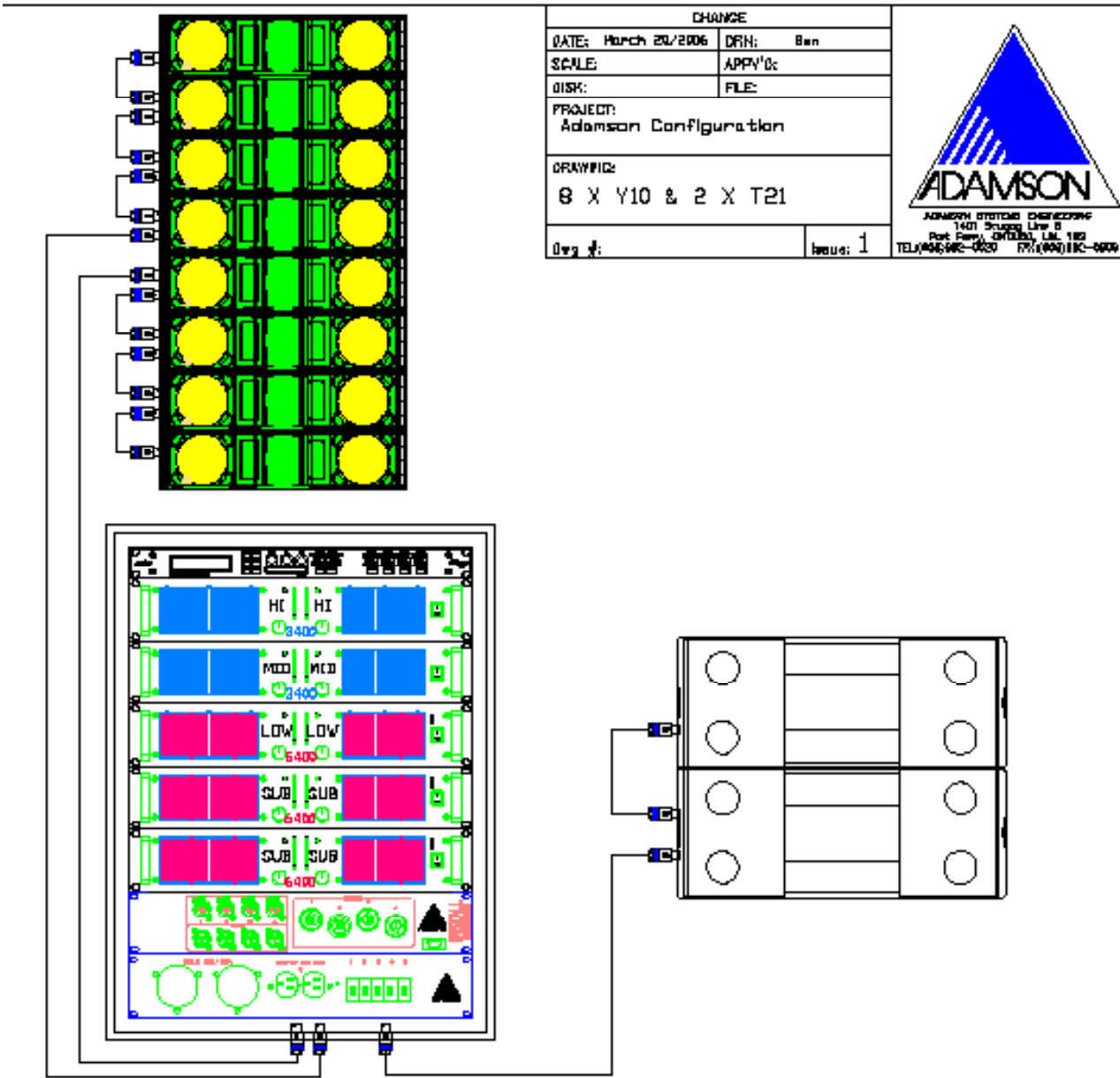


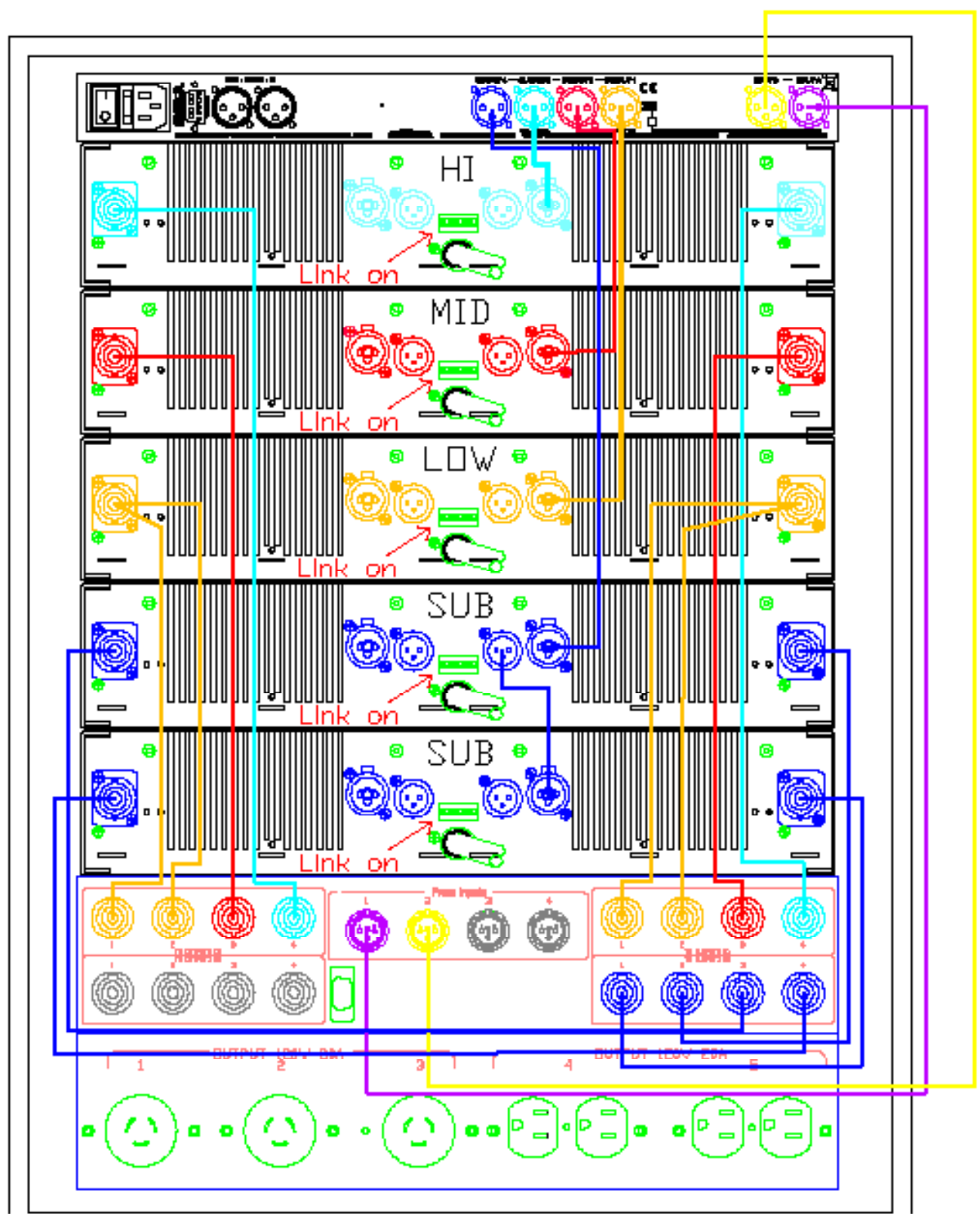
DATE	CHANGE	Legend
DATE: March 3/2007	DRN: Jeff Danilko	High —
SCALE:	APPVD:	Mid —
DISK:	FILE:	Low —
PROJECT: 4 X Y18 & 2 X T21/NL8		Sub —
DRAWING: AID Configuration		XTA Input 1 —
Dwg # Issue: 1		XTA Input 2 —





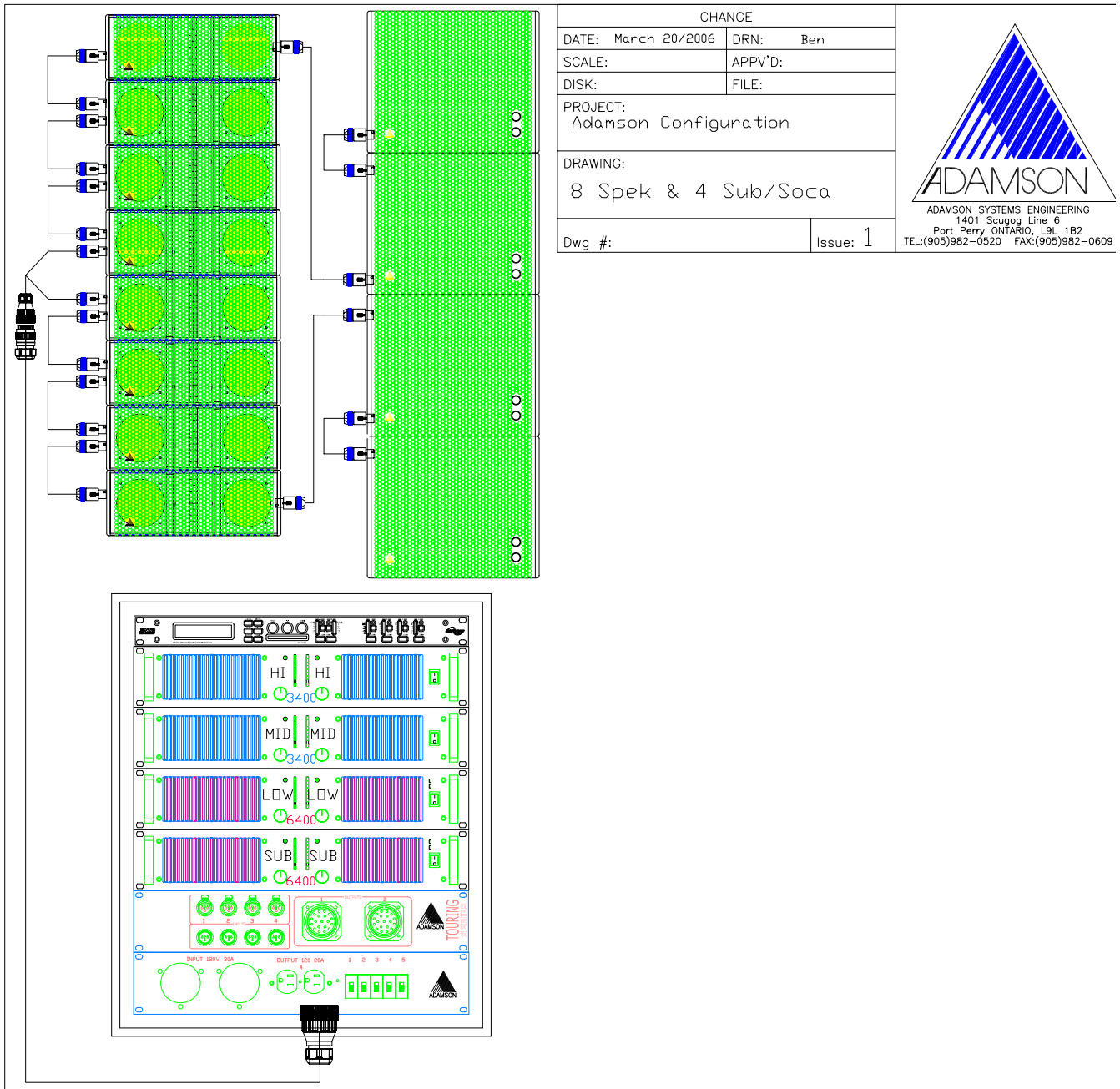
Basic configuration for 8 Y10 (flown) with 2 T21 subs (stacked) with NL8





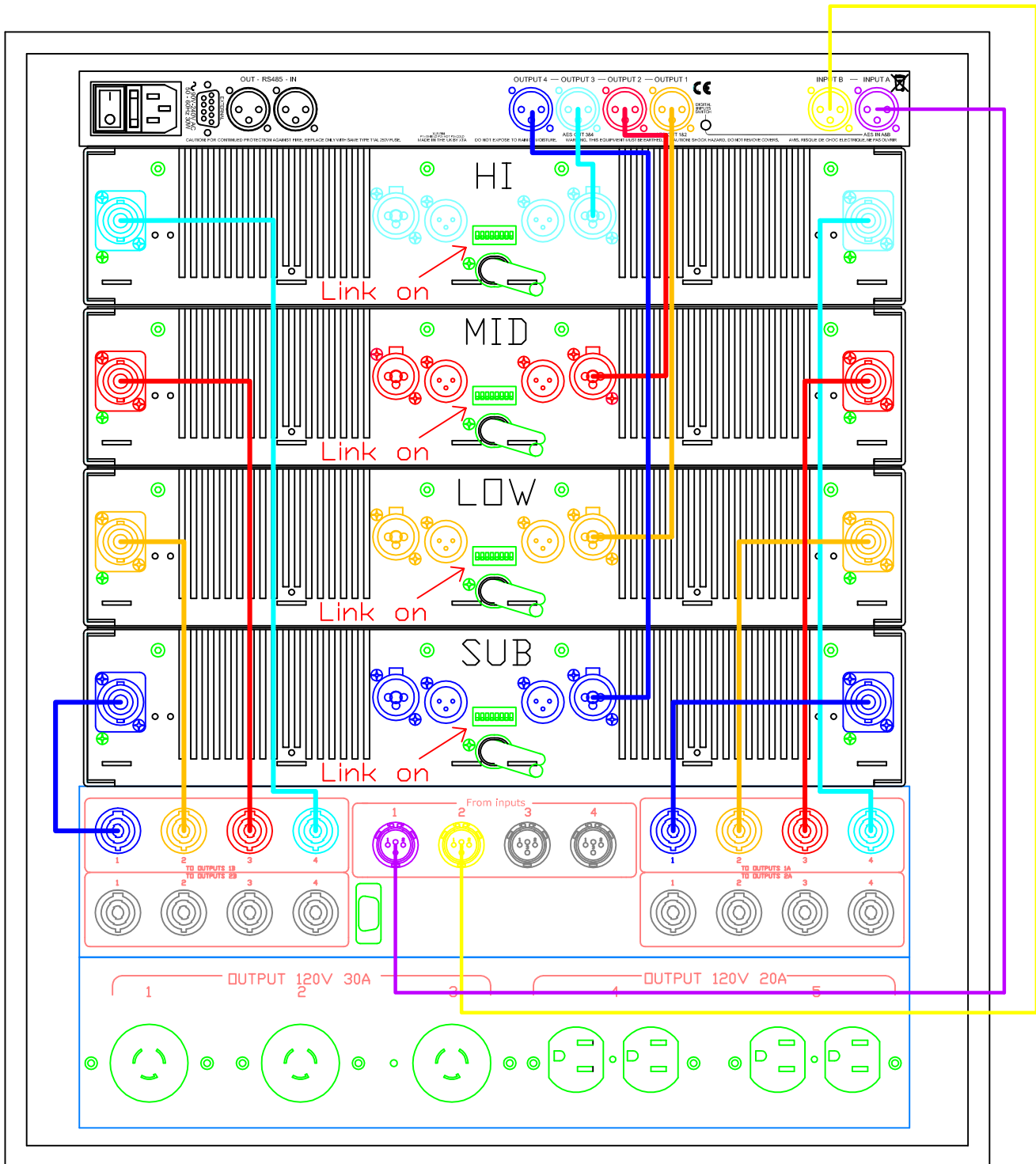


Basic configuration for 8 SpekTriX with 4 SpekTriX Subs (both flown) with Socapex



CHANGE	
DATE: March 20/2006	DRN: Ben
SCALE:	APPV'D:
DISK:	FILE:
PROJECT: Adamson Configuration	
DRAWING: 8 Spek & 4 Sub/Soca	
Dwg #:	Issue: 1

ADAMSON SYSTEMS ENGINEERING
1401 Scugog Line 6
Port Perry ONTARIO, L9L 1B2
TEL:(905)982-0520 FAX:(905)982-0609





Adamson Systems Engineering

1401 Scugog Line 6,
Port Perry Ontario, Canada, L9L 1B2

T: [905] 982 0520

F: [905] 982 0609

www.adamsonproaudio.com sales@adamsonproaudio.com