



Adamson Systems Engineering

presets loading **manual**
Version 1.0



ADAMSON SYSTEMS ENGINEERING
TORONTO CANADA
T: +1 [905] 982 0520 F: +1 [905] 982 0609
www.adamsonsystems.com
Copyright © 2009 Adamson Systems Engineering Inc.

presets loading **manual**



Table of Contents

1.0 Introduction.....	5
2.0 Computer Settings.....	6
3.0 XTA Settings.....	7
4.0 AudioCore.....	8

presets loading manual

1.0 Introduction



This user manual contains the information and steps on how to load presets into any XTA DP series processor using AudioCore and the .xbl files.

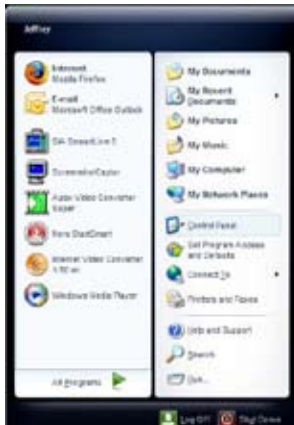
Note: The DP6i interface is distinct, please visit XTA website for operating instructions.
www.xta.co.uk

2.0 Computer Settings

The first step to insure trouble free downloading is to find the COM port number of your computer, whether using a COM port mounted on the computer's motherboard, or a USB to RS232 adaptor. This information can be found by following these steps.

2.1 Open the "start" menu and click on "Control Panel" (figure 1). If it is not shown you can right click on "My Computer" and go to properties, (figure 2) and skip step 2.2

(figure 1)

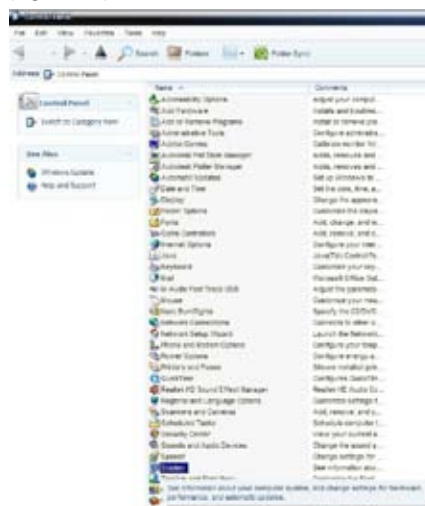


(figure 2)



2.2 Within the "Control Panel" open find the System icon (figure 3) and open the window. Select the hardware tab, and click on the "Device Manager" button. (figure 4)

(figure 3)



(figure 4)





2.0 Computer Settings

2.3 Expand the Ports (COM and LPT) list, and find your device (figure 5) . As long as your COM port has a number between 1 and 12, AudioCore will use it. If it is higher, you will have to contact your computer manufacturer’s technical support for instruction on how to change the number.

Right click on the device and select “Properties”, and then the “Port Settings” tab. (figure 6)
Check the “Bits Per Second” box. Typically the default is 9600bps, the maximum port speed of any DP series processor is 38400bps.

(figure 5)



(figure 6)

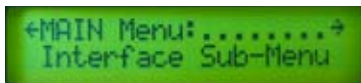


3.0 XTA Processor Settings

3.1 Plug in and turn on the processor. Once it has woken up, you will hear the relays click, while navigating the menu system from the front control panel. Depending on which DP series you’re using, the DP2xx or the DP4xx, the menu system will differ somewhat.

Start by pressing “Menu” and use the NEXT > or the “FREQ” knob to scroll over to Interface Sub-Menu (figure 7)
Press “ENTER” to access the PC Interface Setup screen (figure 8)

(figure 7)



(figure 8)



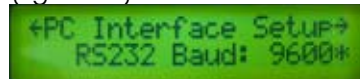
3.2 At the PC Interface Setup screen you will see an asterisk (*) beside the word “Master” when working with an RS232 connection. (Figure 8) Press “ENTER” to continue to the next screen.

3.3 Master Source will appear (figure 9) press ENTER on RS232. On the Wiser2400 Wireless and the Midi Relay screen, simply press “ENTER” to skip them, and default should be set to “NO”. On the RS232 Baud select the same speed as your computer’s COM port. (figure 10). Press “ENTER” until you get to “Remote ID”, and set this to 1 (figure 11). Press “ENTER” one more time to exit the menu.

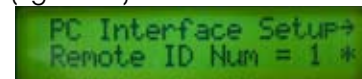
(figure 9)



(figure 10)



(figure 11)

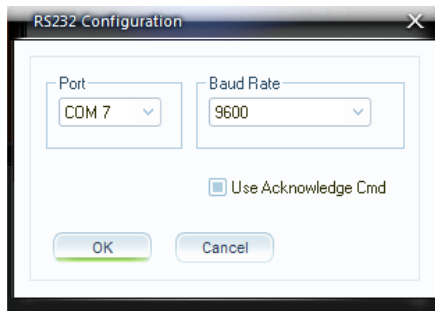




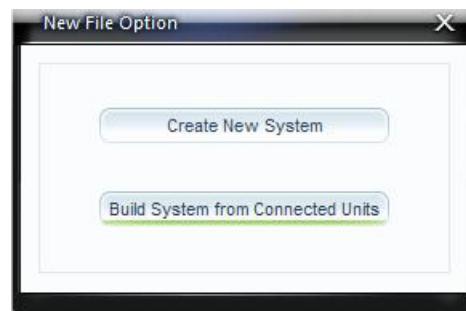
4.0 AudioCore

4.1 Plug in the RS232 cable to the processor and the computer, then turn the unit's power on. Open the AudioCore software. Click on "Remote" pull down menu and select RS232. In the pop up window select the "COM port number" and "speed". (figure 12)
Click on "file" and "new". If it asks to save changes click "NO". A dialogue box will appear. Select "Build System From Connected Units" button (figure 13), a pop-up animation will confirm that its scanning for units. If there are no issues, a unit on "ID 1" will be shown. (figure 14)

(figure 12)



(figure 13)



(figure 14)



(figure 15)



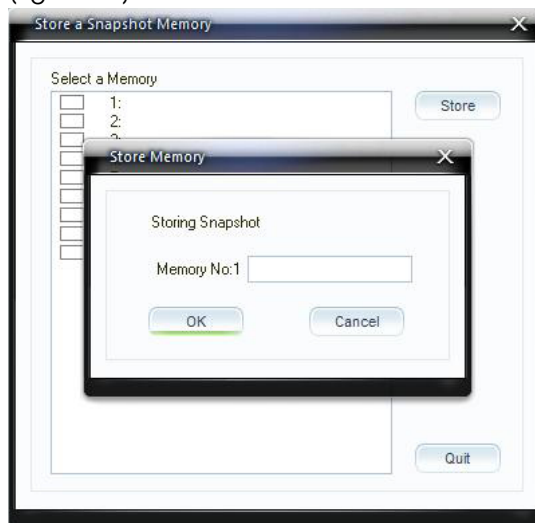
4.2 Click on the "Device" pull down menu and click on "modify". Using the "preset" button, load the preset file you intend to use. A pop-up window will appear with all the presets contained in the file. (figure 15) Select the first preset, and click "OK". If a message asking to "reset parametric input", click on the appropriate option for your application, as this will flatten all EQ points on all the inputs. Locate the "store snap shot" (picture of a camera) button from the tool bar and click on it.

4.0 AudioCore

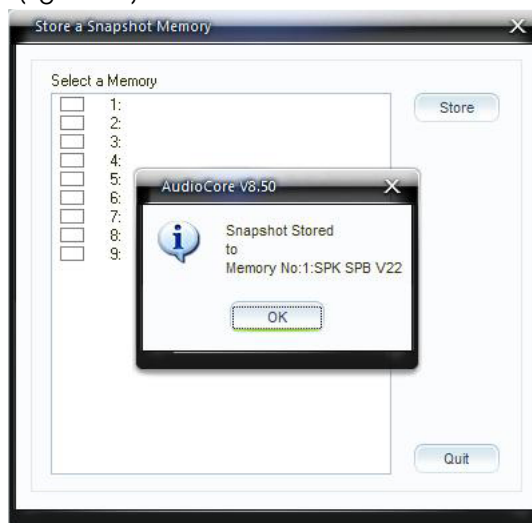
4.2 continued

A pop-up will appear with 9 different memory locations for you to choose. (figure 16) Select the first memory location and click on store, a pop up box will appear asking for a "preset name", it is advised to input the same name as the preset, i.e. SPK SPB V22. Then software will show a pop up confirming the preset has been stored, and at which location.

(figure 16)



(figure 17)



4.3 To recall a preset that has been loaded into the unit from the front controls, press "MENU" scroll over to "Xover Sub-Menu" and press "ENTER". On the "Load a Xover" press "ENTER" to find the preset you want to load and press "ENTER", a confirmation message will appear and then press "ENTER" again to exit.



Adamson Systems Engineering

1401 Scugog Line 6,
Port Perry Ontario, Canada, L9L 1B2

T: [905] 982 0520

F: [905] 982 0609

www.adamsonproaudio.com sales@adamsonproaudio.com